



LOU PINET



Still under the spell of the place today, the Pariente family took over the Lou Pinet hotel in 2017 and completely transformed it, thanks to an ideal dream team.

Charles Zana and **François Vieillecroze** for the architecture, landscape designer **Jean Mus** for the gardens, Riccardo Giraudi of BeefBar for the restaurant... Lovers of the French Riviera in particular, have thus combined their talents to reinvent this spa hotel in Saint-Tropez as a private home, where you can meet up with friends to live another **Tropezian experience**. The real one.

34 Rooms

26 rooms and 8 suites

1 Restaurants & 2 bars

Beefbar with sushi bar, indoor and outdoor bar

Spa

Outside swimming pool, Tata Harper spa and fitness



Rooms



Food



Spa

Celebrate your events in Saint-Tropez

Five minutes from the Place des Lices, towards the salin headland, the Hotel Lou Pinet has the bohemian Saint-Tropez charm that captivated Françoise Sagan, Boris Vian, Picasso and Juliette Greco.

Hotel Lou Pinet is characterized by the charm of its typical southern architecture, its tropezian garden and its swimming pool, which is in fact the largest Saint Tropez. Hotel Lou Pinet gives that little something extra that makes all our guests so happy.

By choosing to entrust us with the organization of your event, you are assured of excellent service thanks to the know-how and professionalism of our teams. To curate the most beautiful experience, each detail of your event, wedding, incentive or party is directed by the talented teams of Lou Pinet in order to create an absolutely magical event.

Laurent Drouard,
General Manager





Rooms & Suites

The golden light of the South permeates the spaces in perfect affinity with the decor materials, including linen, ceramics, rope, terracotta, and lime. The rounded, almost organic shapes in this refined atmosphere pay homage to the style of the '60s and '70s, from the floor plan to the large benches and lamps designed by Charles Zana.

3 categories of rooms:

- * 8 Superior Room (from 270sq.ft/25m²)
- * 9 Deluxe room (from 322sq.ft/30m²)
- * 9 Prestige Room (from 376sq.ft/35m²)

3 categories of suites :

- * 6 Deluxe Junior Suite (from 420sq.ft/40m²)
- * 1 Superior Suite (from 540sq.ft/50m²)
- * 1 Prestige Suite (840sq.ft/80m²)

Services included:

- * Daily buffet breakfast served in our restaurant
- * Non-alcoholic beverages in the mini bar
- * Swimming pool and fitness access
- * Valet service
- * Porterage
- * Service & Taxes





Beefbar & sushis

Indoor & outdoor

Indoor | 75 m² / 810 sq.ft | Up to **70** guests

Outdoor | 220 m² / 2370 sq.ft | Up to **70** guests (or **130** with additional fees)

The BeefBar restaurant of Lou Pinet offers many dishes to share and combines chic simplicity, excellence, and modernity. For lovers of exceptional meats, the BeefBar has attracted our guests since it opened, being seduced by the flavours of the world's best meats.

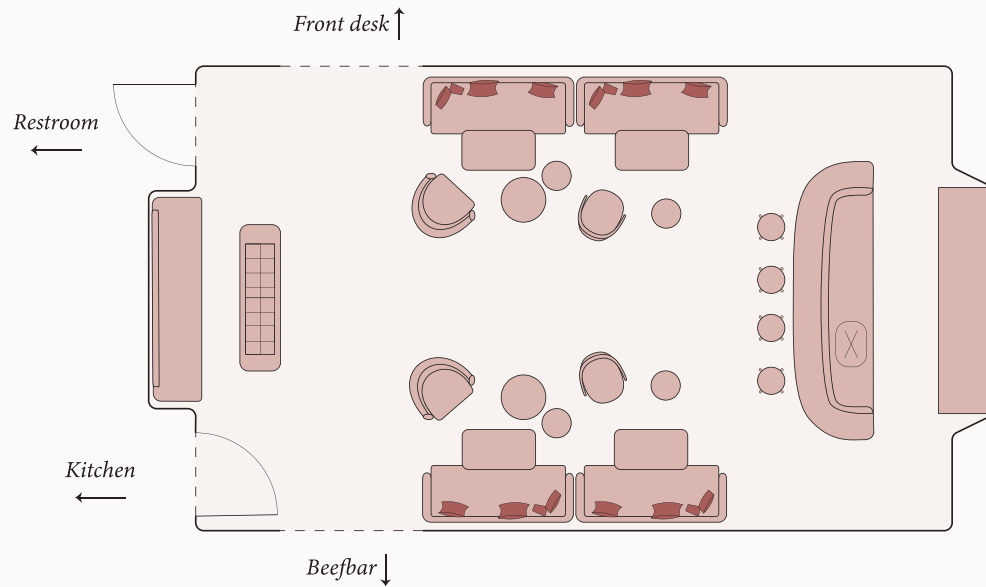


Bars

Indoor & outdoor

53 m² / 570 sq.ft | Up to 15 persons | **Indoor**
45 m² / 485 sq.ft | Up to 15 persons | **Outdoor**

Cosy and bright, the indoor bar is the perfect meeting point for family and friends through the day. Bathed in natural light, this Saint Tropez bar welcomes you in a calm, restful and above all warm setting.

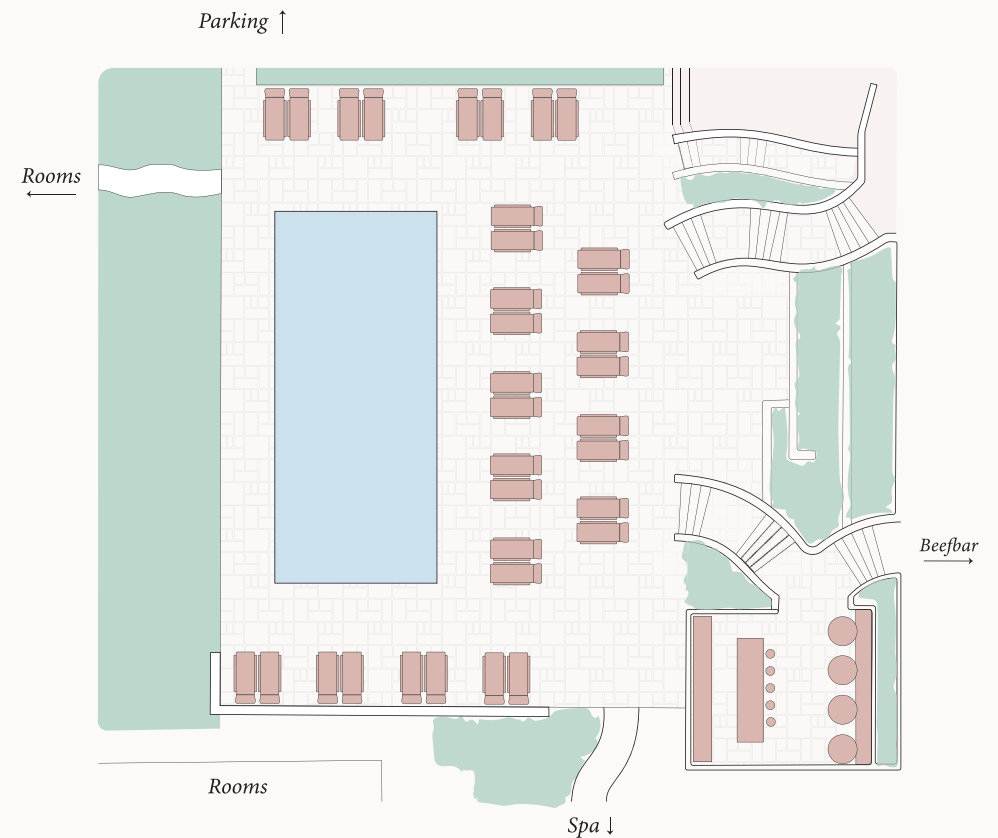




Pool

250 m² / 2700 sq.ft | Up to **50** persons | **Outdoor**

The swimming pool is the central attraction in the gardens, dominating the outdoor space and linking the different houses. It can welcome many events around, such as cocktail parties and even seated dinners - feel free to share with us your perfect setup for this place!



Capacity charts

<i>Indoor</i>			<i>Outdoor</i>	
<i>Seated</i>	<i>Sqm/Sqft</i>		<i>Sqm/Sqft</i>	<i>Seated</i>
70	75 / 810	Beefbar	220 / 2370	130
15	53 / 570	Bars	45 / 485	15
-	-	Pool	250 / 2700	50
-	25 / 270	Fitness Room	-	-

We would be delighted to share with you our list of trustworthy partners for any of your needs such as flower arrangements, musicians, photographs, wedding planners, etc.



Menus



The below menus are given as example, they are subject to change.
We can also suggest menu alternatives such as vegetarians, vegans, kosher, etc.

Welcoming Dinner

Starters to share

Super kale salad
Avocado houmous
Tempura pop corn

On the grill

Seabream, imperial soy sauce filet, fresh
ginger
Grilled seasonal vegetables

Desserts

Gelato Mantecato
Seasonal fruit basket

Lunch/Barbecue

On the grill

Selection of meats
french fries
Grilled seasonal vegetables

Desserts

Marbled chocolate bar

Brunch

Assortment of pastries
Assortment of breads
Cakes, buns, pancakes
Fruit juices
Yoghurt, cottage cheese
Organic granola and muesli
Jams and honey from the region
Scrambled eggs
Poached eggs
Poultry sausage
Platter of cold cuts
Langoustines, shrimps, tarama, blinis
Assorted seasonal salads
Quiches, pissaladières
Mini sandwiches
Selected cheeses
Seasonal pies
Fresh fruit

Gala Dinner

3-course

Seabream ceviche, green papaya, mango,
caramelized cashew nuts

•
Selection of fine Black Angus meats
and homemade mashed potatoes

•
Baklava cheesecake, pistachio, orange zests

Signature 3-course

Signature carpaccio Black Angus, zaatar
and maple syrup

•
Selection of fine Wagyu meats
and homemade mashed potatoes

•
Signature chocolate soufflé, sesame, caramel
and cacao sorbet



Rates

Food

rates per person

Welcoming dinner	from 110€
Lunch/Barbecue	from 110€
Brunch	from 80€
Gala Dinner	from 180€

Beverages

rates per person

Wine packages (2 glasses, 1/2 bottle of water included)	
* Classic	from 50€
* Premium	from 80€

Please note that for the privatization of any space, a minimum spend fees may apply.

Rooms & Suites

Superior Rooms	from 600€	Deluxe Junior Suites	from 793€
Deluxe rooms	from 683€	Superior Suite	from 1 013€
Prestige Rooms	from 738€	Prestige Suite	from 1 315€

Full privatization

Minimum of 4 nights

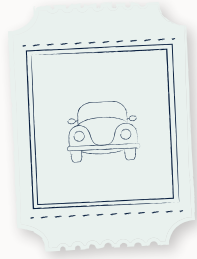
Rate includes rooms, breakfast, lunches and dinners
(beverages not included)

from 190 000 EUROS

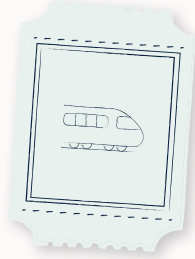
How to reach us?



Marseille Provence (MRS) - 1h 30min
Nice (NCE) - 1h 15min



Nice - 1h 30min
Marseille - 1h50
Lyon - 4h 20min



Saint Raphaël TGV - 50 min
Toulon TGV - 1h 05min



70 Chemin du Pinet
84410 Crillon Le Brave
France



Groups & Events contact
Aurélie Martin
events@maisonspariente.com
+33 (0)4 90 65 99 11

Sales contact
Maxime Denis
m.denis@maisonspariente.com
+33 (0)6 03 68 67 01

www.loupinet.com